

‘Ūkiu Energy Community Meeting

www.ukiuenergy.com

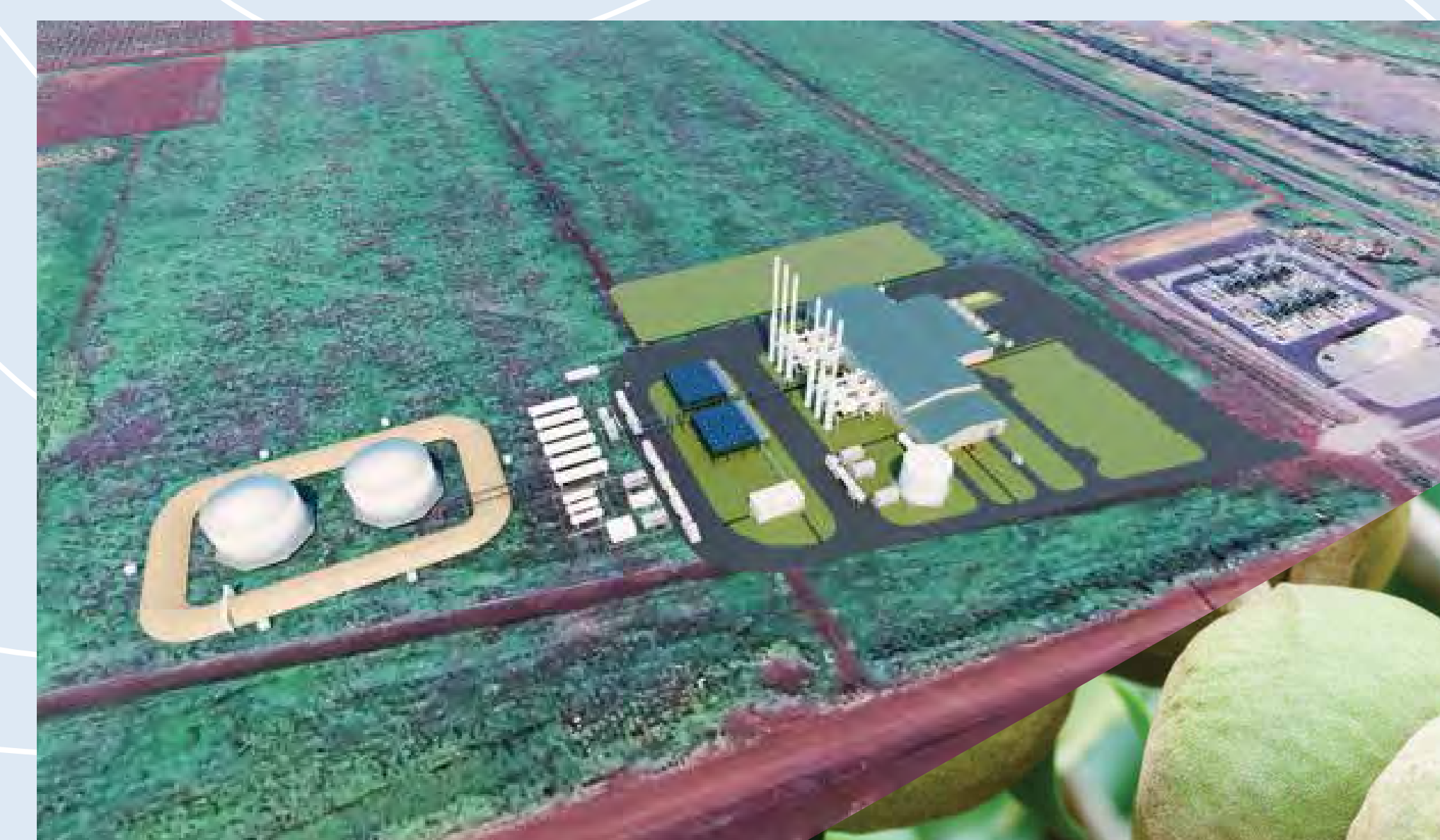
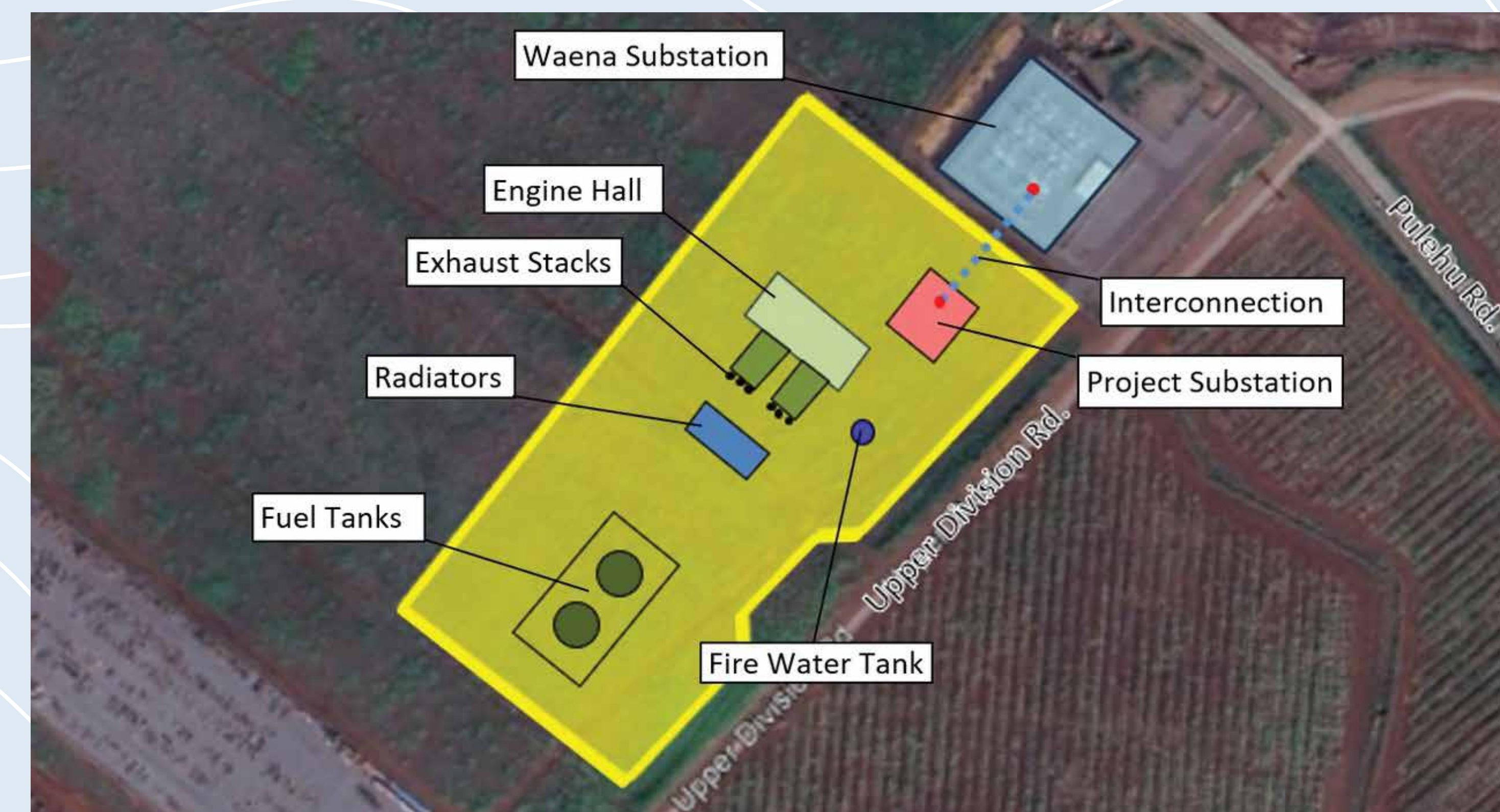
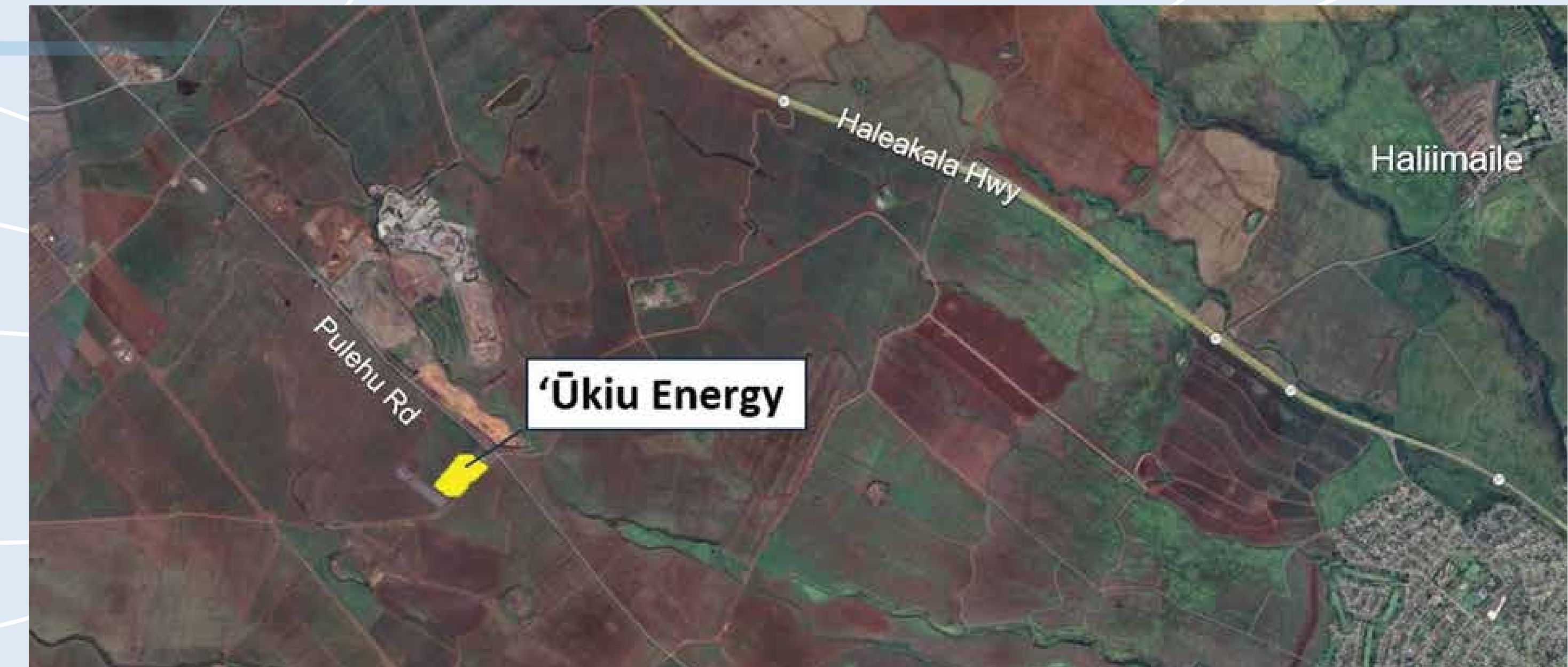
PROJECT DESCRIPTION

‘Ūkiu Energy

- Construction and operation of a clean, renewable biofuel power generation facility
- 40 MW of always available (24/7) energy
- Located off of Pulehu Road, across from the Central Maui landfill and behind Hawaiian Electric’s new Waena Substation
- Provides energy to Maui islandwide
- Accelerates grid recovery after outages using state-of-the-art technology
- Supports grid stability by offsetting the loss of generation from the planned retirement of the Mā‘alaea and Kahului power plants, while supporting increased rooftop solar adoption and improving grid integration

PROJECT SITE OVERVIEW, LAYOUT AND INTERCONNECTION

- Approximately 10 acres of Heavy Industrial zoned land on TMK (2) 3-8-003:024
- Six engines utilizing renewable biofuel
- Buildings will house the engines and control room with 24/7 monitoring
- Six 115-foot exhaust stacks with advanced emissions controls
- On-site biofuel storage for 30 days of facility usage that includes secondary containment for aquifer protection
- Fire monitoring equipment, fire suppression systems and on-site water tank to reduce fire risk
- Directly interconnects to Hawaiian Electric at the adjacent Waena Switchyard via a transmission line



PROJECT BENEFITS

‘Ūkiu Energy supports Hawai‘i’s clean energy future

- Contributes to Hawai‘i’s renewable energy and decarbonization goals
 - 100% Renewable Portfolio Standard goal by 2045
 - 2030 and 2045 carbon neutrality goals
- Helps stabilize cost of electricity
- Replaces and reduces dependence on fossil fuels
- Advances pathway to increased energy independence
- Contributes to the Island’s energy security

COMMUNITY BENEFITS

‘Ūkiu Energy offers significant benefits

- Provides local construction-related jobs at prevailing wages
- Offers apprenticeship opportunities with local labor
- Creates immediate short-term and long-term high-skilled jobs at prevailing wages for current and future generations
- Supports local service and supply businesses
- Provides a Community Benefits package of \$120,000 per year for 30 years, upon commencement of facility operations

PERMITTING REQUIREMENTS AND APPROVALS

	PERMITTING	APPROVING BODY	STATUS
STATE	Chapter 6E, Hawai'i Revised Statutes (HRS)	State Historic Preservation Division (SHPD)	In Process
	Covered Source Permit (CSP)	State Department of Health	Approved
	National Pollutant Discharge Elimination System (NPDES)	State Department of Health	Will file 90 days before start of construction
COUNTY	Building Permit; including the required permits under the Fire Prevention Bureau	Department of Public Works (DPW) Development Services Administration (DSA) Fire Prevention Bureau	Anticipate filing in April
	Grading Permit	DPW, DSA	Anticipate filing in April
	Electrical/Plumbing Permits	DPW, DSA	Anticipate filing in April

PROJECT DECOMMISSIONING

At facility end of life, Ameresco will:

- Responsibly decommission project with a Comprehensive End-of-Life Plan
- Provide third-party environmental monitoring of decommissioning activities
- Remove all project components
- Project components that cannot be reused locally will be shipped out of Hawai'i for reuse, recycling or disposal
- Restore the site to its pre-development condition

ENVIRONMENTAL IMPACTS

- Zoning and Land Use: Consistent with State Urban and County Heavy and Industrial designations
- Biological Review: Flora and fauna review has determined that no species of concern or critical habitat identified in the project area
- Flood Hazard: Site is not located in Special Flood Hazard District
- Hazardous Materials: Prior hazardous materials assessment reviewed, and preliminary determination is that no hazardous materials are present on site
- Traffic Study: Minimal trips to project site are anticipated thus no significant traffic impacts are anticipated
- Permits: Ongoing discussions with Development Services Administration and Fire Prevention Prevention Bureau; all applicable permits will be secured
- Project is outside of the tsunami evacuation and sea level rise zones

CULTURAL IMPACTS

- Cultural Studies: ASM prepared an Archaeological Inventory Survey (AIS) and Ka Pa‘akai Analysis (KPA) for the project site
 - Extensive background research, including traditional cultural information, historical maps and documents, prior cultural and archaeological studies
 - Preliminary Determination: No anticipated impact on known historical or cultural resources
- Previous Surveys and Site Inspections: Revealed only irrigation ditch and clearing mound (outside planned construction footprint)
 - No known valued cultural or natural resources
- Field Survey: Formal pedestrian survey for this project will be completed
- Discovery Protocol: If resources are encountered, actions will follow the Chapter 6E process of documentation, preservation, redesign, or other feasible actions to protect archaeological or architectural resources

CONSTRUCTION ACTIVITIES

- Mitigation Plan – Mitigation for potential traffic, parking, dust, and noise during construction will be implemented
 - Traffic – Delivery of large equipment that might impact traffic will be scheduled outside of high traffic times
 - Dust – Dust control measures will be implemented to reduce dust leaving the site
 - Noise – Construction will be conducted during weekday hours between 7 a.m. to 5 p.m.; the project is designed to meet the criteria in Hawai‘i Revised Statutes 11-46 (Community Noise Control) during operation
- Notification – Although not anticipated, construction activities that may impact the community will be posted on the project website prior to the start of those activities

AIR QUALITY PERMIT

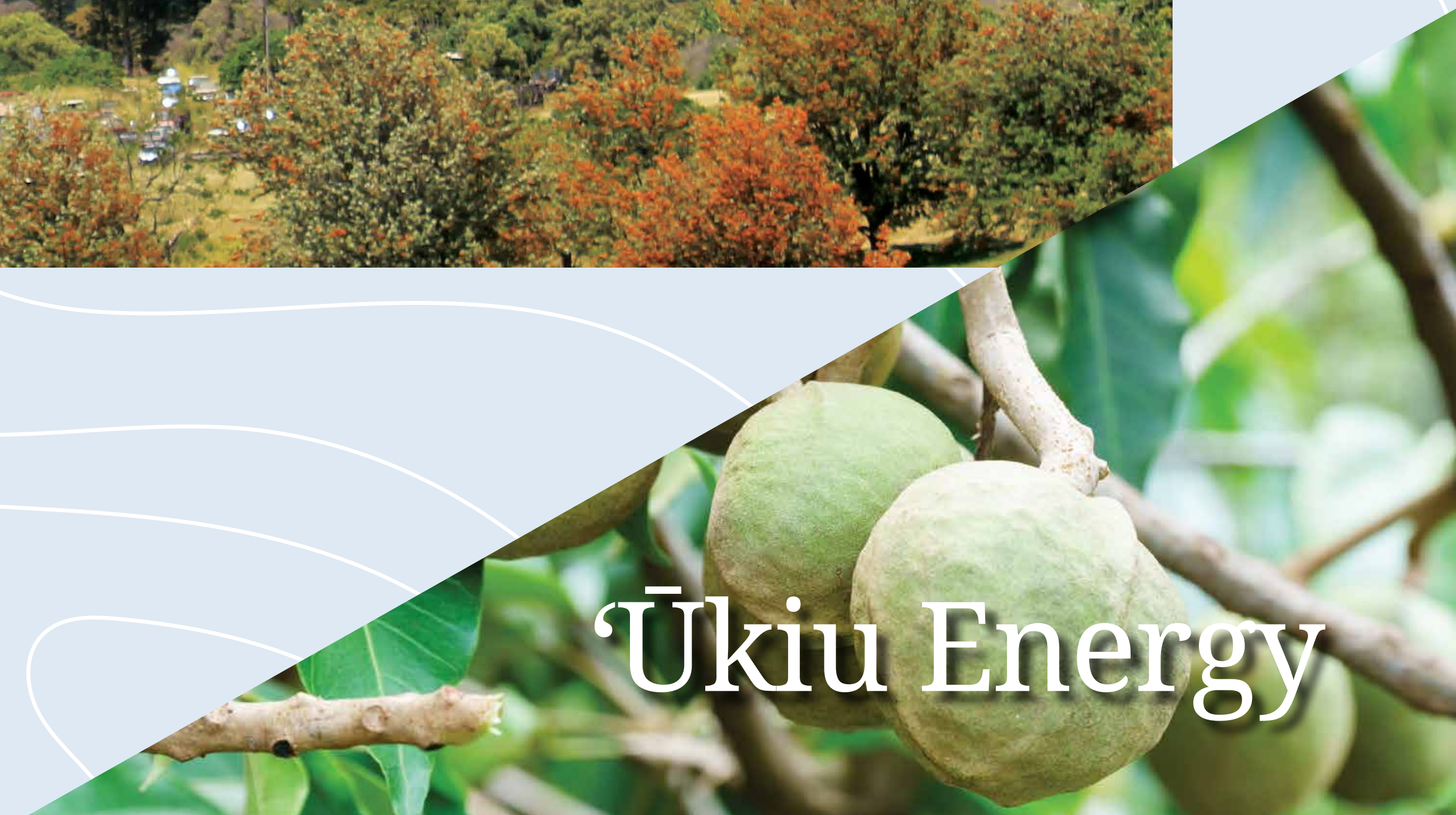
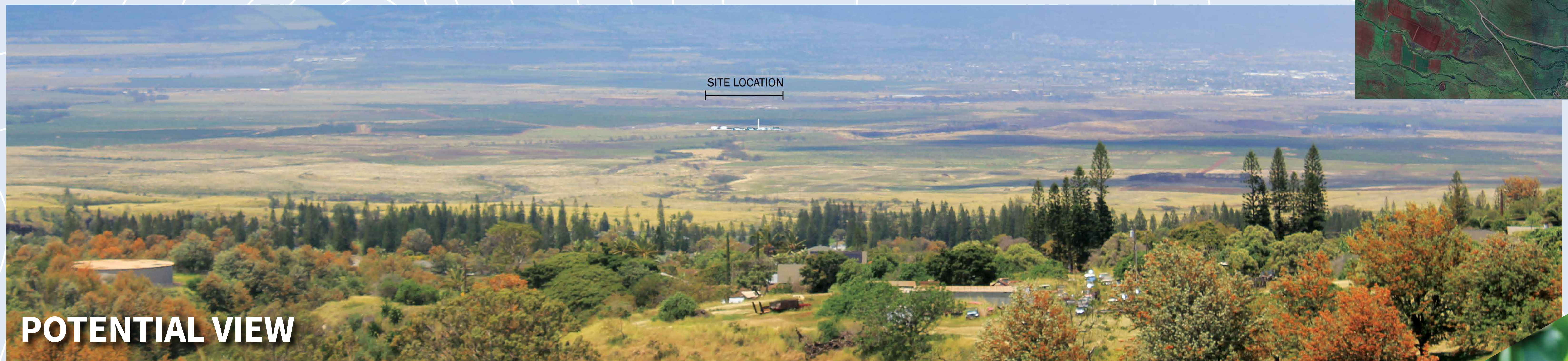
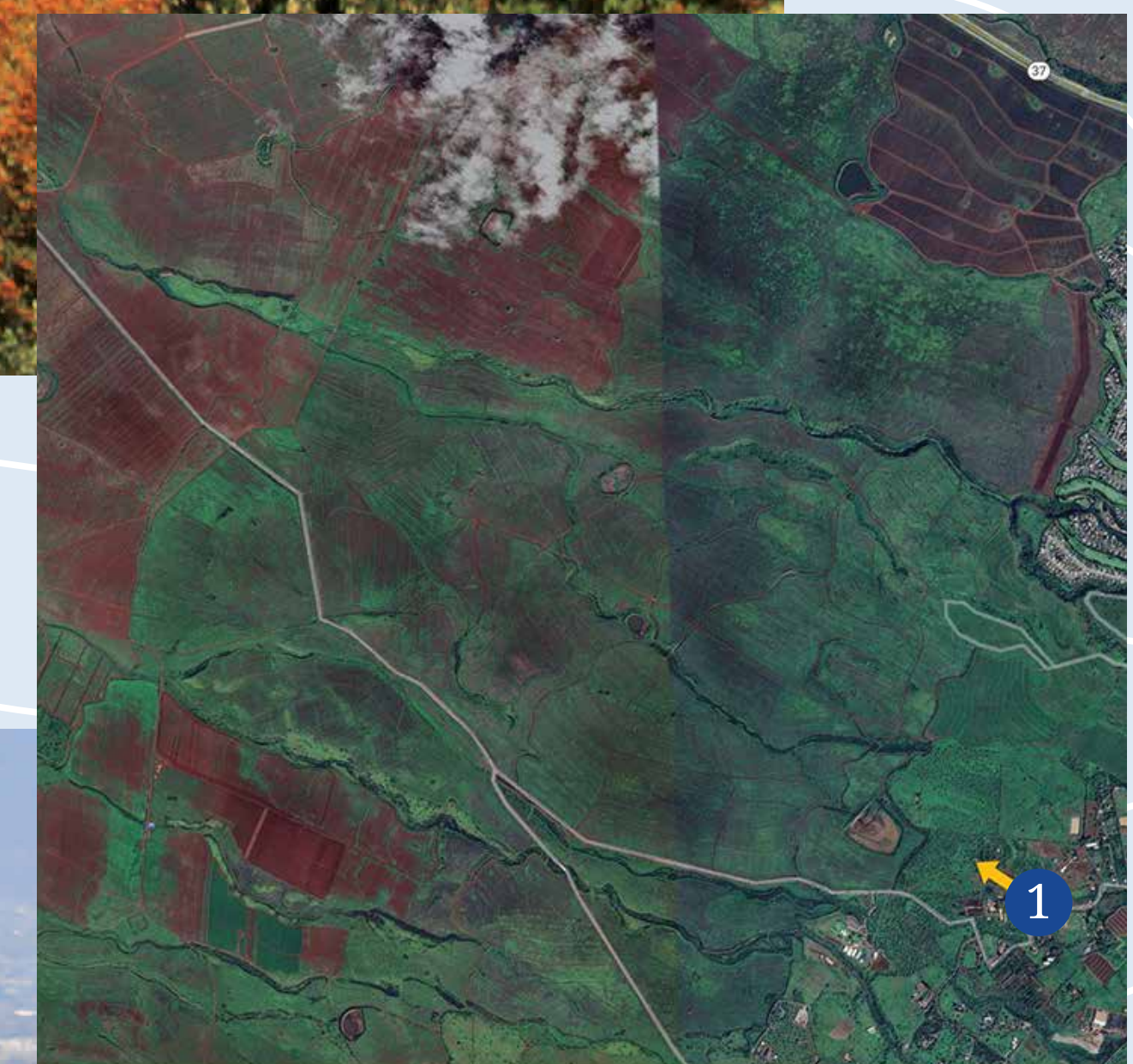
‘Ūkiu Energy will obtain a Covered Source Permit (CSP) for operation of the power plant

- Hawai‘i Department of Health Clean Air Branch issued the permit on January 12, 2026

CSP will ensure compliance through:

- Required emission control technologies
- Limits on hourly and annual emissions
- Continuous monitoring
- Annual emissions testing, recordkeeping and reporting requirements

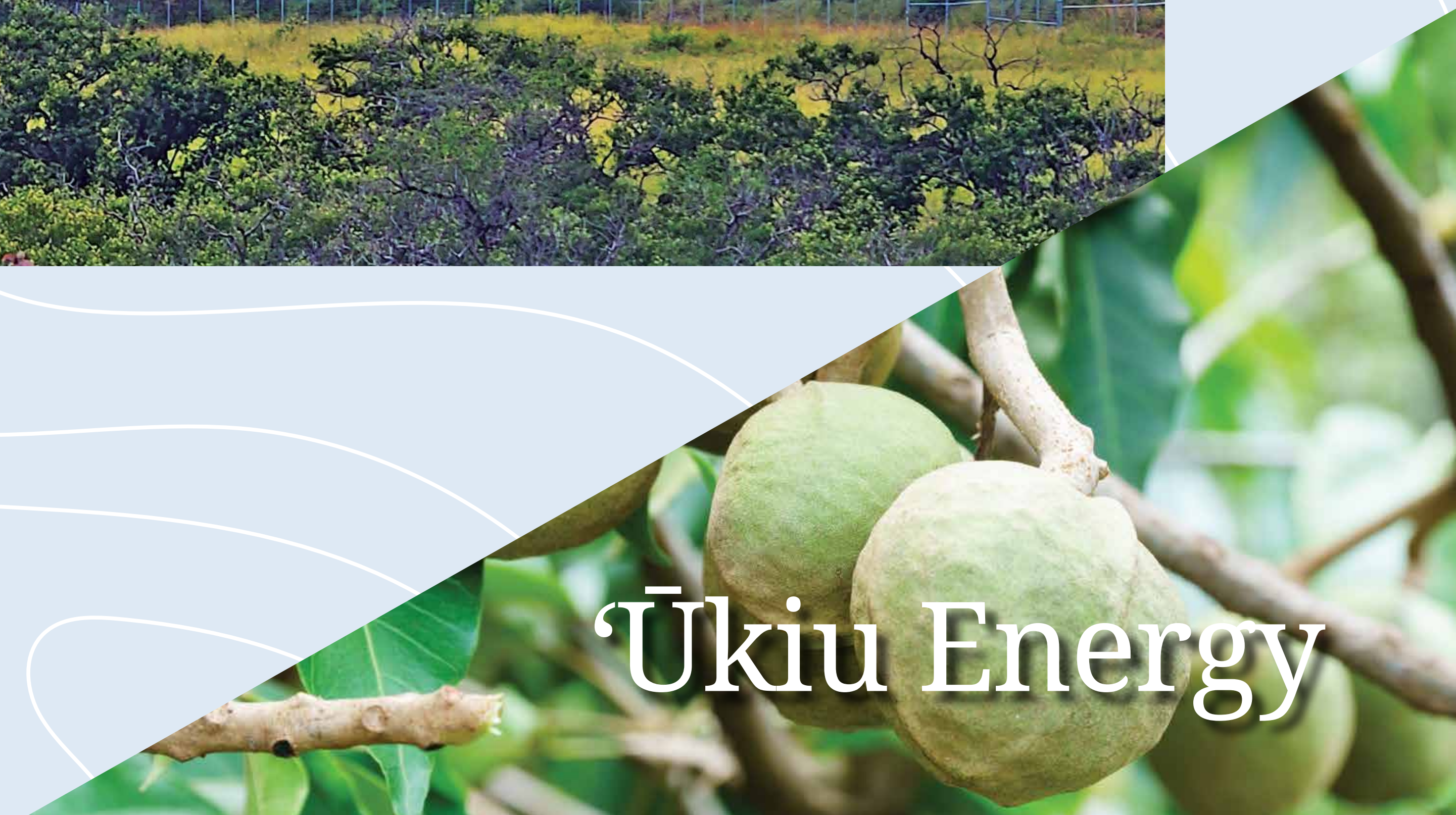
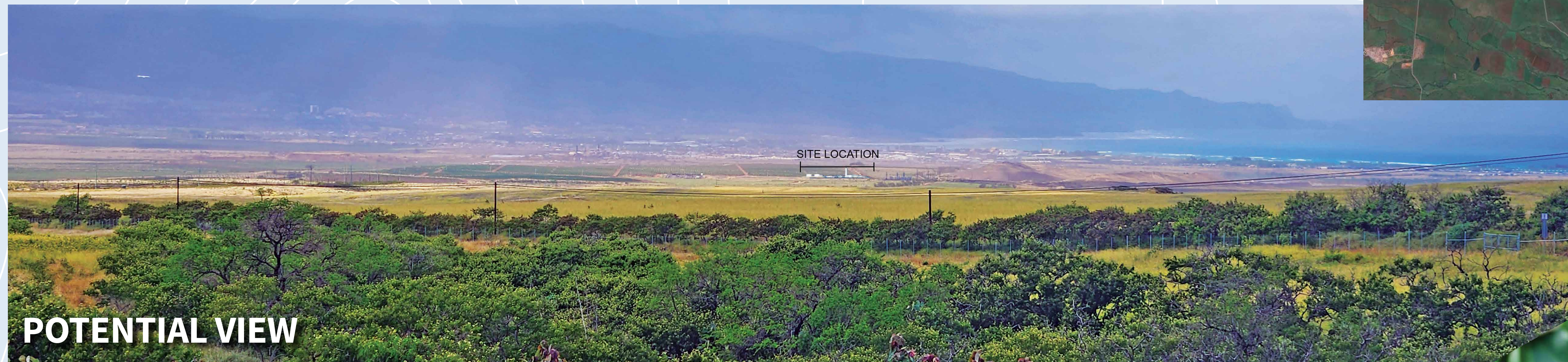
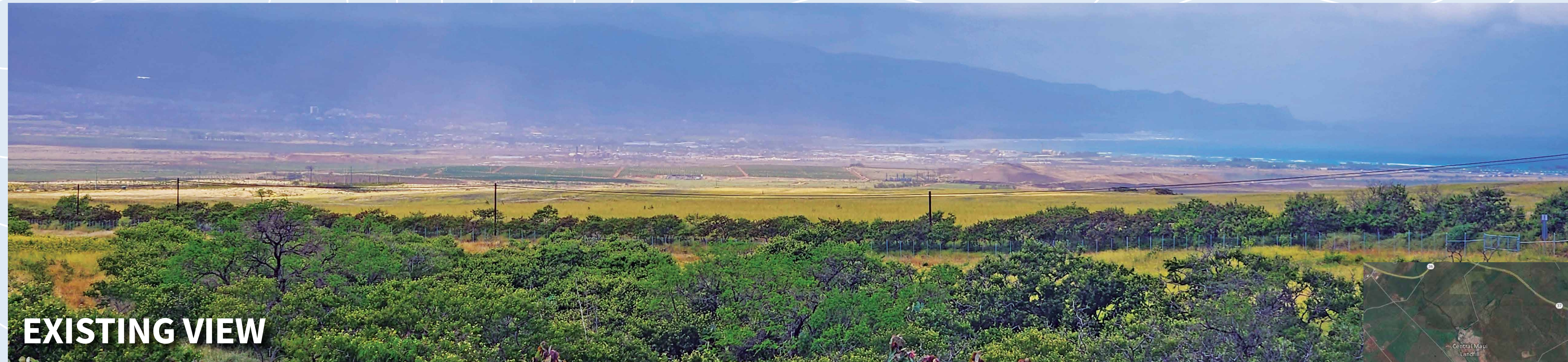
1 View of 'Ūkiu Energy from 'A'apueo Parkway *Viewing toward Kahului*



'Ūkiu Energy

2 View of 'Ūkiu Energy from Ocean Vodka

Viewing toward Kahului



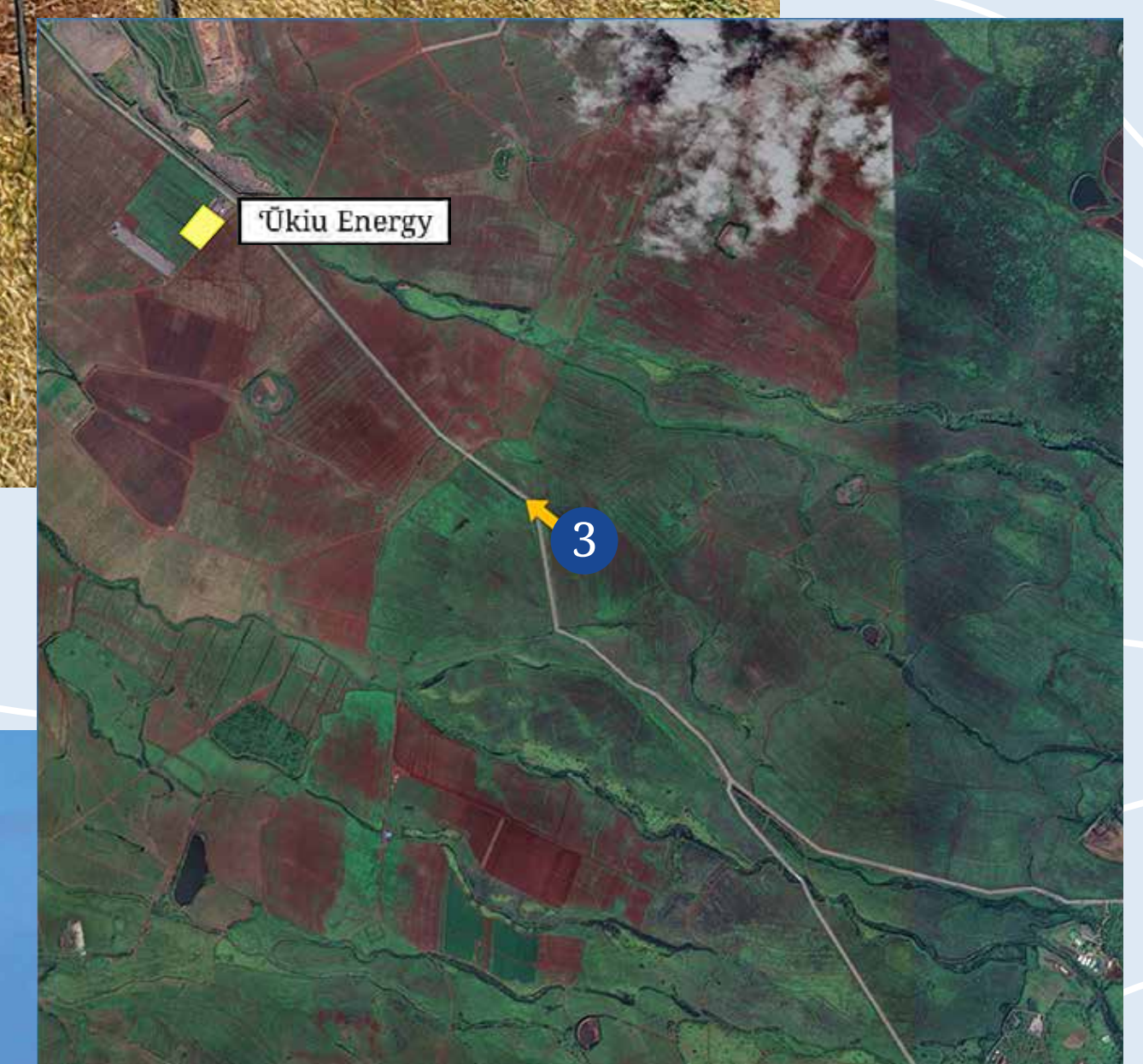
3

View of Ūkiu Energy from Pūlehu Road

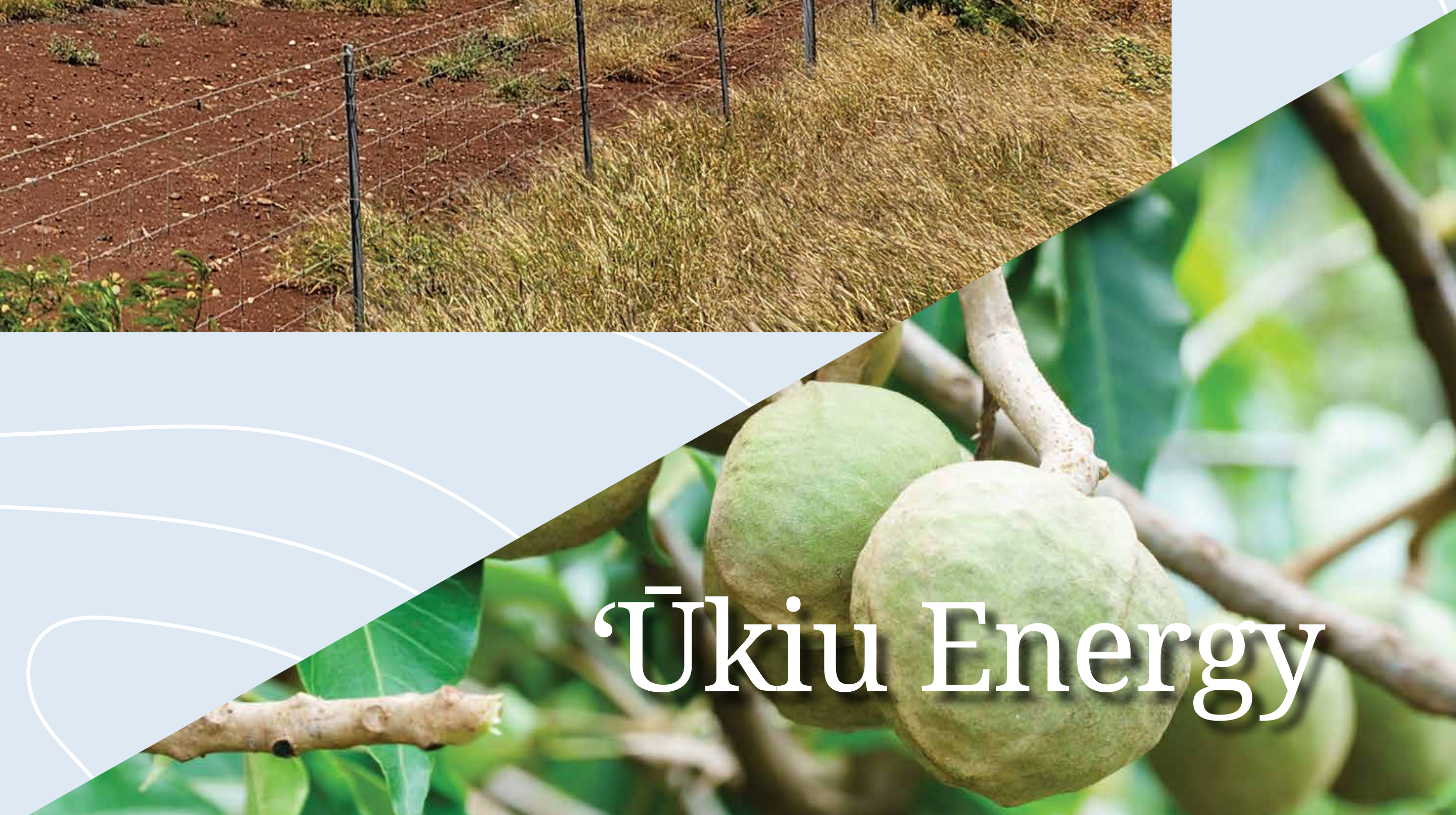
Viewing toward Kahului



EXISTING VIEW

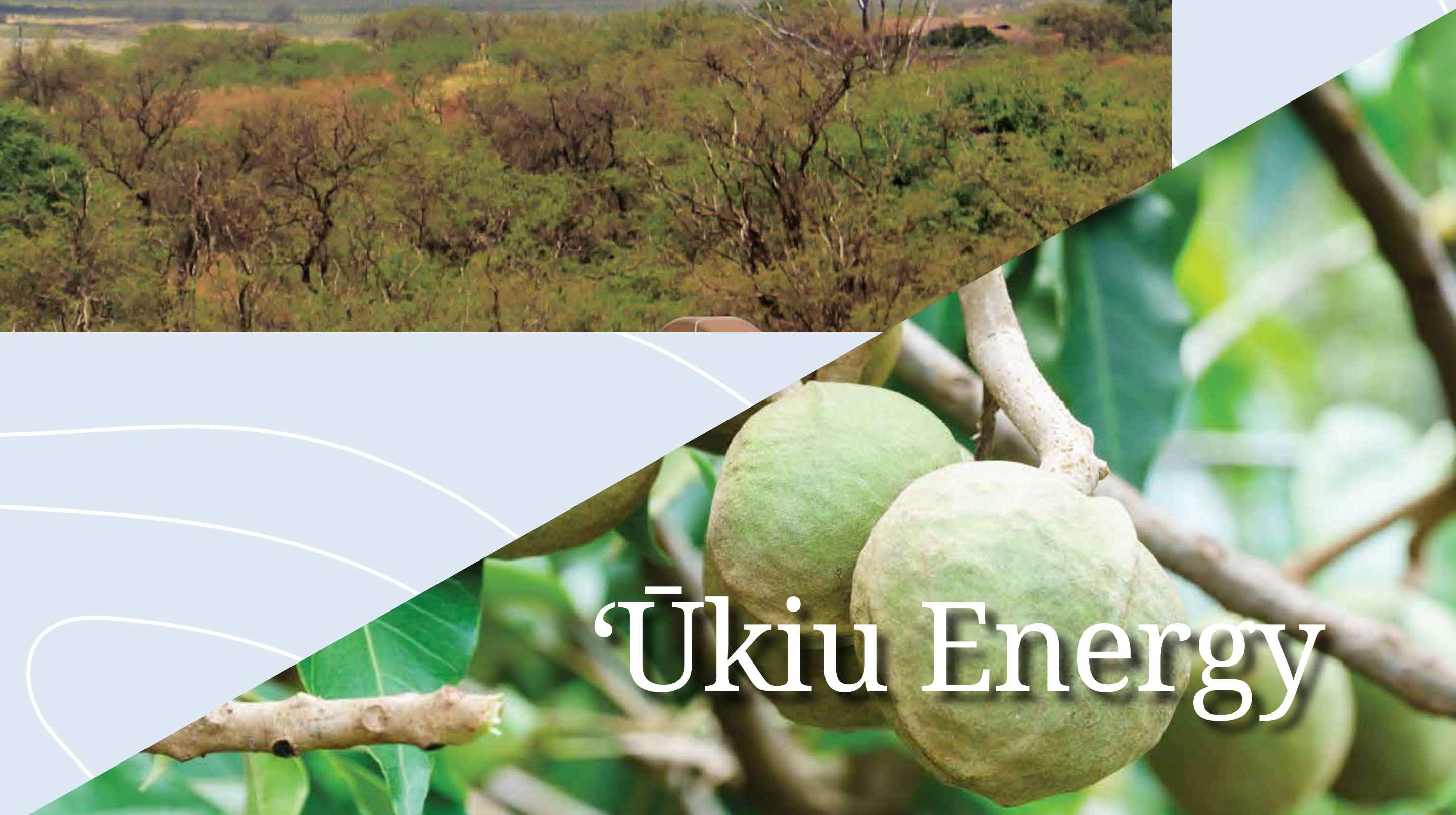
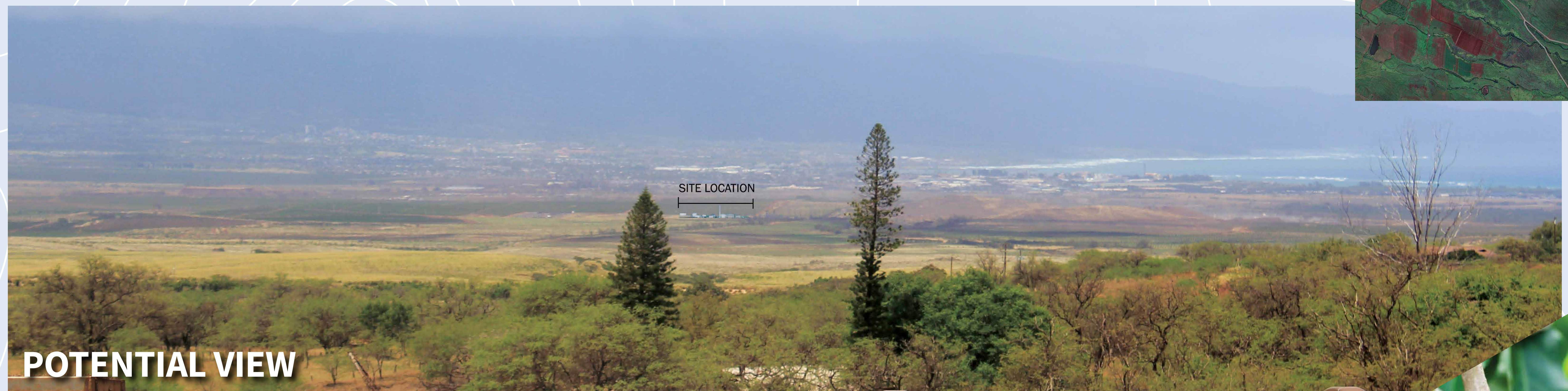
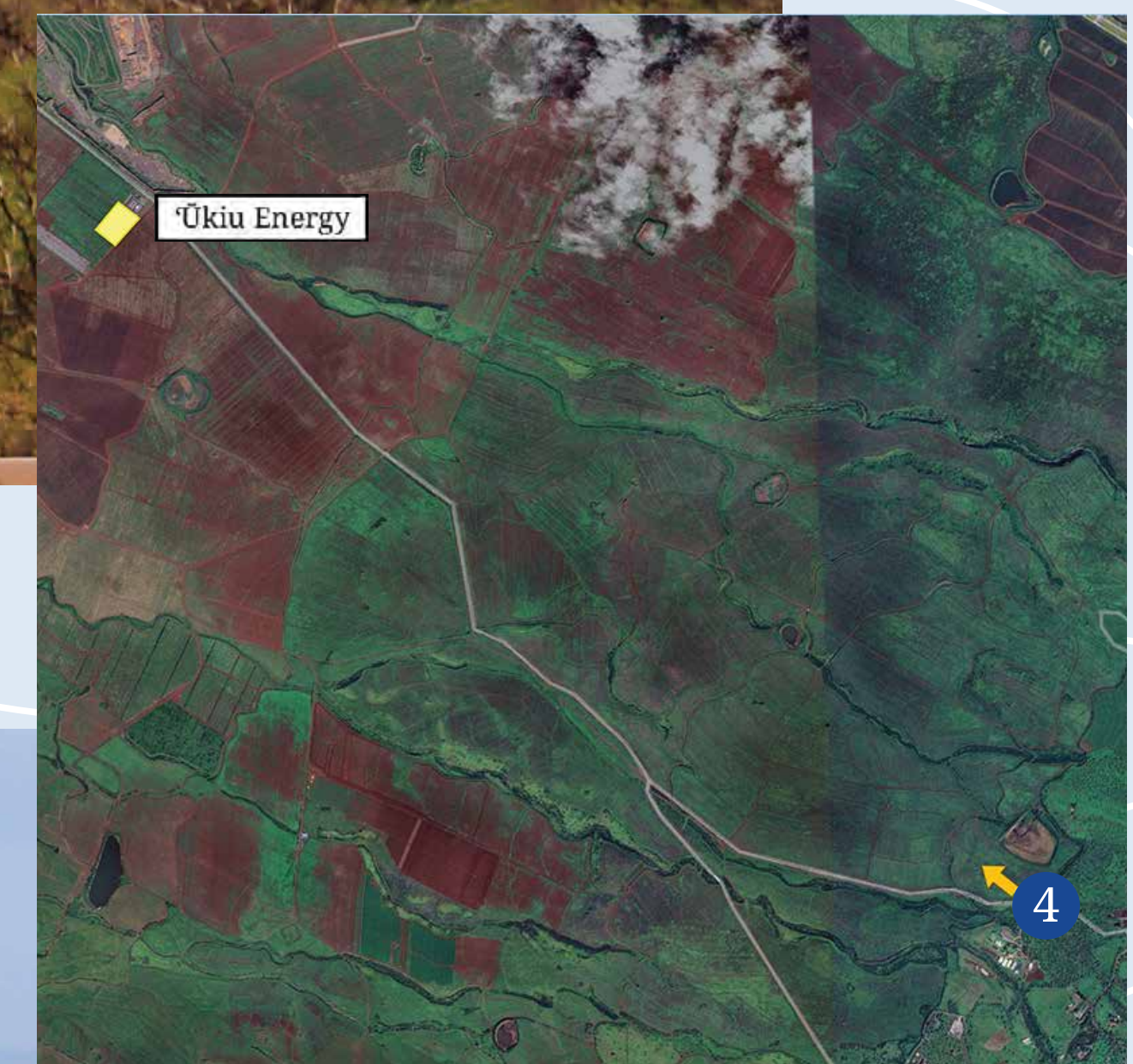


POTENTIAL VIEW

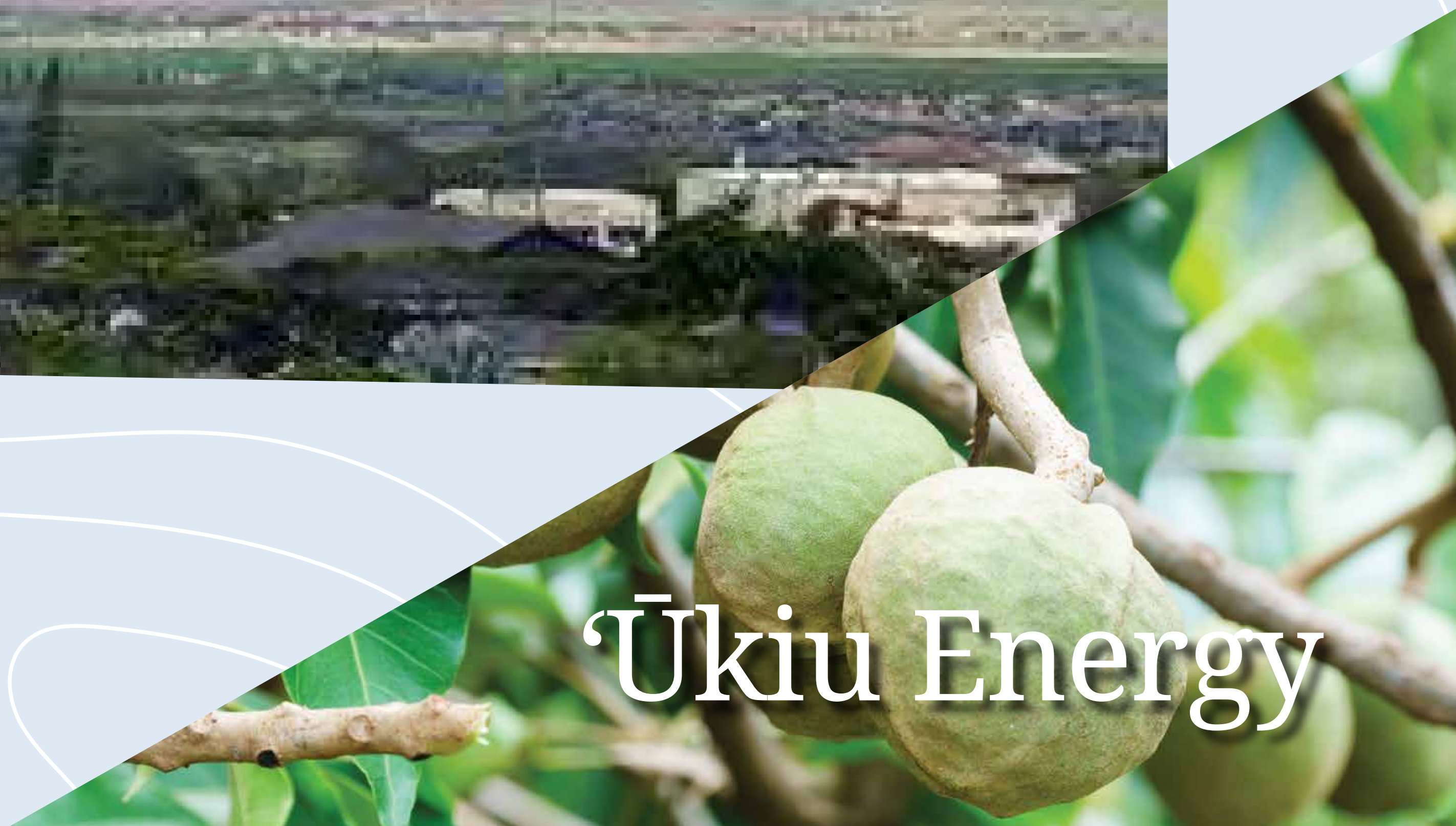
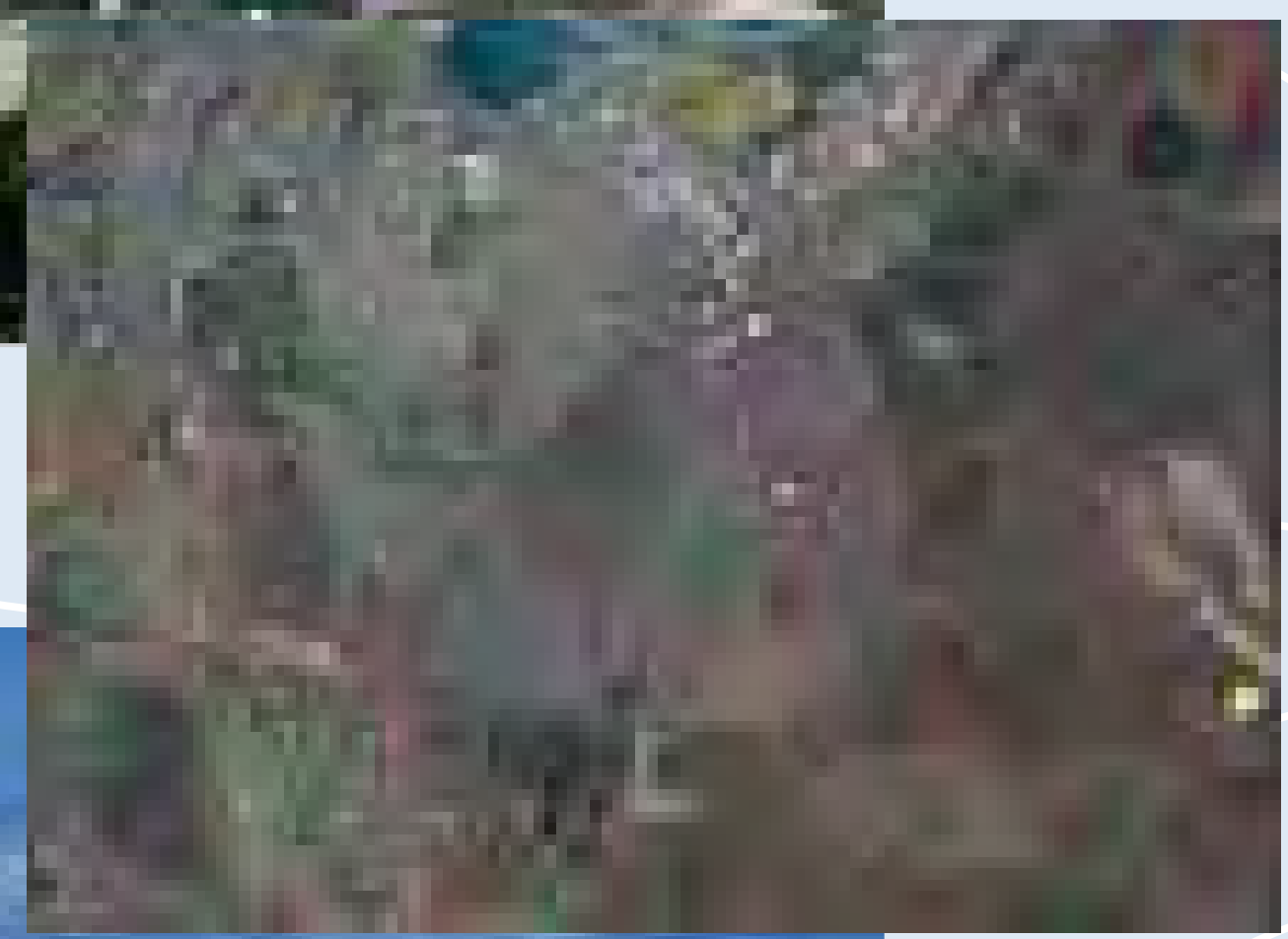


Ūkiu Energy

4 View of 'Ūkiu Energy from 'Ōma'opio Road *Viewing toward Kahului*



5 View of 'Ūkiu Energy from Wailuku Heights
Viewing toward UpCountry



WE WANT TO HEAR FROM YOU!

How to provide comments:

Please provide us with your questions and comments using the comment form available here tonight or via the comment form on the website or project email.

Comments and Questions are welcome anytime.

‘Ūkiu Energy

Website

ukiuenergy.com/contact

Email

info@ukiuenergy.com

AMERESCO IN HAWAII

KŪPONO SOLAR

- Clean, renewable solar power generation facility
- 42 MW photovoltaic solar
- 168 MWh (4 hours) battery energy storage system
- Provides energy to surrounding area and greater O‘ahu
- Located on the Navy West Loch Annex of Joint Base Pearl Harbor-Hickam
- Provides renewable energy day or night
- Commercial operation in June 2024



EFFICIENCY AND RENEWABLE SOLUTIONS

- Property Condition Assessment
- Retro-commissioning
- EPA ENERGY STAR® certification
- LEED certification
- Energy Audits Level I, Level II, Level III
- Mechanical engineering design
- Energy Saving Performance Contracts
- Energy as a Service (EaaS)
- Solar/Battery Behind-the-Meter Power Purchase Agreements
- Engineering Consulting



Sheraton Maui Resort



Mahana at Kā'anapali



Kaua'i Beach Resort



Pukalani Foodland



Kahala Hotel



Fresh Island Fish

DEPARTMENT OF DEFENSE

Energy Security Modernization Project Efficiency and Conservation Solutions

HICKAM COMMUNITIES

Conversion and Maintenance of 2,500 Homes (Lendlease)

High-efficiency water source heat pump systems

High-efficiency water fixtures

Smart irrigation control system

Smart home energy thermostats

LED interior lighting and streetlights

SCHOFIELD ISLAND PALM COMMUNITIES

Conversion and Maintenance of 5,800 Homes (Lendlease)

High-efficiency water fixtures

Highly efficient HVAC system

Weatherization sealing and home insulation

LED interior lighting and streetlights

6.1 MW rooftop solar PV

Benefits

- \$13 million annual savings for 25 years for each community
- 30% reduction in energy consumption
- Leverages private capital for public benefit
- Contributes to state's Renewable Portfolio Standard and decarbonization goals
- Water reduction
- \$472 million local investment
- Short- and long-term local jobs for 25 years