

‘Ūkiu Energy Open House Community Meeting

May 7, 2024 | 4:00-7:00 P.M.

Maui Arts & Cultural Center, Haynes Meeting Room

PROJECT DESCRIPTION

‘Ūkiu Energy

- Construction and operation of a clean, renewable biofuel power generation facility
- 40 MW of always available (24/7) energy
- Located off of Pulehu Road, across from the Central Maui landfill and behind Hawaiian Electric’s new Waena Substation
- Provides energy to Maui Island
- Can support restoration of the electric grid after grid failures
- Stabilizes the grid, enabling more rooftop solar



‘Ūkiu Energy

PROJECT SITE OVERVIEW, LAYOUT AND INTERCONNECTION

- Approximately 10 acres of Heavy Industrial zoned land on TMK (2) 3-8-003:024
- Six engines using renewable biofuel
- Building that will house engines
- Control room
- On-site biofuel storage for 14 days of facility usage
- Directly interconnects to Hawaiian Electric at the adjacent Waena Switchyard



Ūkiu Energy

PROJECT BENEFITS

‘Ūkiu Energy supports Hawai‘i’s clean energy future

- Contributes to Hawai‘i’s decarbonization goals
 - 100% Renewable Portfolio Standard goal by 2045
 - 2030 and 2045 carbon neutrality goals
- Helps stabilize cost of electricity
- Replaces and reduces dependence on fossil fuels
- Advances pathway to increased energy independence
- Contributes to energy and national security
- Creates immediate short-term and long-term highly technical jobs at prevailing wages for today and future generations

COMMUNITY BENEFITS

‘Ūkiu Energy offers significant benefits

- Provides local construction-related jobs at prevailing wages
- Offers apprenticeship opportunities with local labor
- Provides local long-term, highly skilled generational impacting technical jobs in plant operations and maintenance
- Supports local service and supply businesses
- Provides a Community Benefits package of \$120,000 per year for 30 years

PERMITTING REQUIREMENTS AND APPROVALS

| | PERMITTING | APPROVING BODY |
|--------|---|--|
| STATE | Chapter 6E, Hawai'i Revised Statutes (HRS) | State Historic Preservation Division (SHPD) |
| | Covered Source Permit (CSP) | State Department of Health |
| | National Pollutant Discharge Elimination System (NPDES) | State Department of Health |
| COUNTY | Building Permit | Department of Public Works (DPW), Development Services Administration (DSA) |
| | Grading Permit | DPW DSA |
| | Electrical/Plumbing Permits | DPW DSA |

PROJECT DECOMMISSIONING

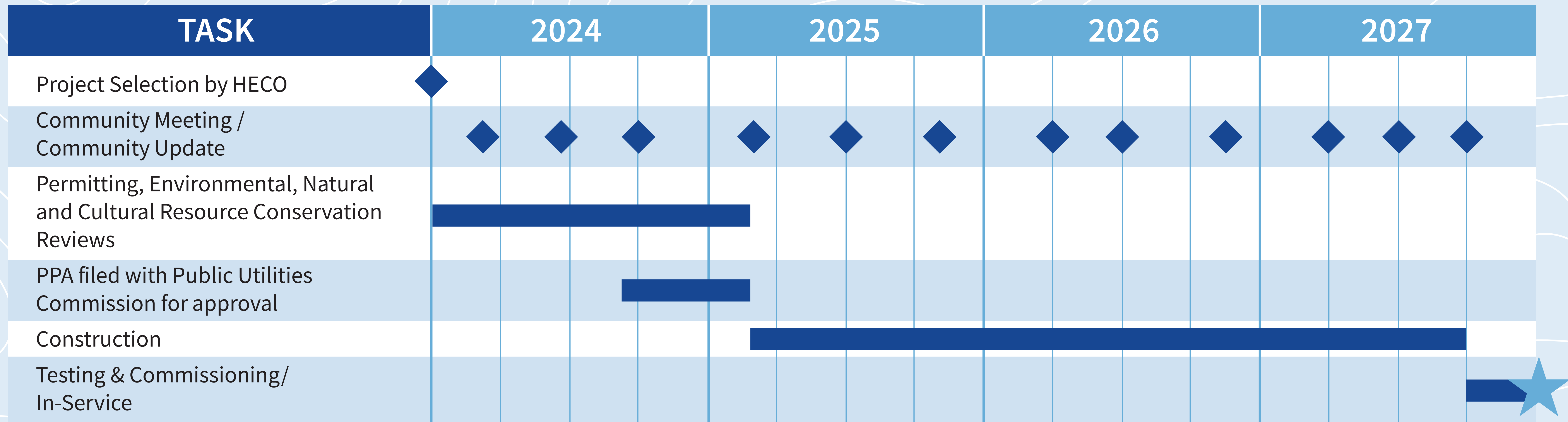
‘Ūkiu Energy

Following the completion of the Power Purchase Agreement (PPA), Ameresco will:

- Commit to responsibly decommission project with a Comprehensive End-of-Life Plan
- Provide third-party environmental monitoring of decommissioning activities
- Remove all project components
- Project components that cannot be reused locally will be shipped out of Hawai‘i for reuse, recycling or disposal
- Restore the site to its condition prior to development

PROJECT TIMELINE (projected)

‘Ūkiu Energy



ENVIRONMENTAL IMPACTS

Preliminary environmental assessment of the site has been performed

- Reviewed existing land use entitlements for the site; reviewed proposed project improvements and the preliminary determination is that the project is consistent with state and county zoning designations, Urban and Heavy Industrial, respectively
 - Meeting held with the County Planning Department in April 2024 to discuss the proposed project and permitting for project implementation
- Reviewed flora/fauna reports for project site and surrounding area; preliminary determination is that no species of concern or critical habitat identified in the project area
- Reviewed Flood Insurance Rate Map for project site; project site is not located in a special flood hazard district

ENVIRONMENTAL IMPACTS (Continued)

- Reviewed prior hazardous material assessment; preliminary determination is that no hazardous materials identified on the site
- Reviewed prior traffic studies and a new traffic study is underway; minimal trips to project site are anticipated and thus no significant traffic impacts are anticipated; project anticipates using existing Hawaiian Electric access from Pulehu Road
- Project-related short- and long-term impacts would be mitigated to the extent practicable

Additional site-specific surveys are anticipated to confirm the preliminary findings

CULTURAL IMPACTS

- ASM is preparing an Archaeological Inventory Survey (AIS) and Ka Pa‘akai Analysis (KPA) for the project site
 - Extensive ongoing background research, including traditional cultural information, historical maps and documents, previous cultural and archaeological studies
 - Formal pedestrian survey for this project will be completed
 - No anticipated impact on known historical or cultural resources
- Previous surveys and site inspections of the property revealed only an irrigation ditch and clearing mound (outside planned construction footprint)
 - No known valued cultural or natural resources
- If resources are encountered, actions will follow the Chapter 6E process:
 - Archaeological or architectural resources: mitigation could include additional documentation, preservation or project redesign
 - Valued cultural or natural resources: “feasible” actions to protect Native Hawaiian rights

CONSTRUCTION ACTIVITIES

Notification – Although not anticipated, construction activities that may impact the community will be posted on the project website

Mitigation Plan – Mitigation for potential dust, erosion and noise during construction will be implemented

Transportation – Construction traffic to and from the project site will be scheduled outside of high traffic times

Noise – Project will be designed to meet the criteria in Hawai‘i Revised Statutes 11-46 (Community Noise Control)

AIR QUALITY PERMITTING PROCESS

‘Ūkiu Energy will obtain a Covered Source Permit (CSP):

- Permit will be issued by Hawai‘i Department of Health Clean Air Branch
- Draft permit will be reviewed by US EPA Region 9
- Public notice/comment period before permit issued

CSP Application includes:

- Air quality impact analysis to demonstrate that project emissions will be within safe levels established by the Department of Health
- Demonstration that the project will use best available control technology for all pollutants
- Demonstration of compliance with all state and federal air quality regulations

Final CSP will ensure compliance through:

- Limits on hourly and annual emissions, fuel use and associated continuous monitoring
- Annual emissions testing, recordkeeping and reporting requirements
- Required emission control technologies

WE WANT TO HEAR FROM YOU!

How to provide comments:

Please provide us with your questions and comments using the comment form available here tonight or via the comment form on the website or project email.

Comments and Questions are welcome anytime.

‘Ūkiu Energy

Website

ukiuenergy.com/contact

Email

info@ukiuenergy.com

EFFICIENCY AND RENEWABLE SOLUTIONS

- Property Condition Assessment
- Retro-commissioning
- EPA ENERGY STAR® certification
- LEED certification
- Energy Audits Level I, Level II, Level III
- Mechanical engineering design
- Energy Saving Performance Contracts
- Energy as a Service (EaaS)
- Solar/Battery Behind-the-Meter Power Purchase Agreements
- Engineering Consulting



Sheraton Maui Resort



Mahana at Kā'anapali



Kaua'i Beach Resort



Pukalani Foodland



Kahala Hotel



Fresh Island Fish

AMERESCO IN HAWAI'I

KŪPONO SOLAR

- Clean, renewable solar power generation facility
- 42 MW photovoltaic solar
- 168 MWh (4 hours) battery energy storage system
- Provides energy to surrounding area and greater O‘ahu
- Located on the Navy West Loch Annex of Joint Base Pearl Harbor-Hickam
- Provides renewable energy day or night
- Estimated In-Service Date: May 2024



DEPARTMENT OF DEFENSE

Energy Security Modernization Project Efficiency and Conservation Solutions

HICKAM COMMUNITIES

Conversion and Maintenance of 2,500 Homes (Lendlease)

High-efficiency water source heat pump systems

High-efficiency water fixtures

Smart irrigation control system

Smart home energy thermostats

LED interior lighting and streetlights

SCHOFIELD ISLAND PALM COMMUNITIES

Conversion and Maintenance of 5,800 Homes (Lendlease)

High-efficiency water fixtures

Highly efficient HVAC system

Weatherization sealing and home insulation

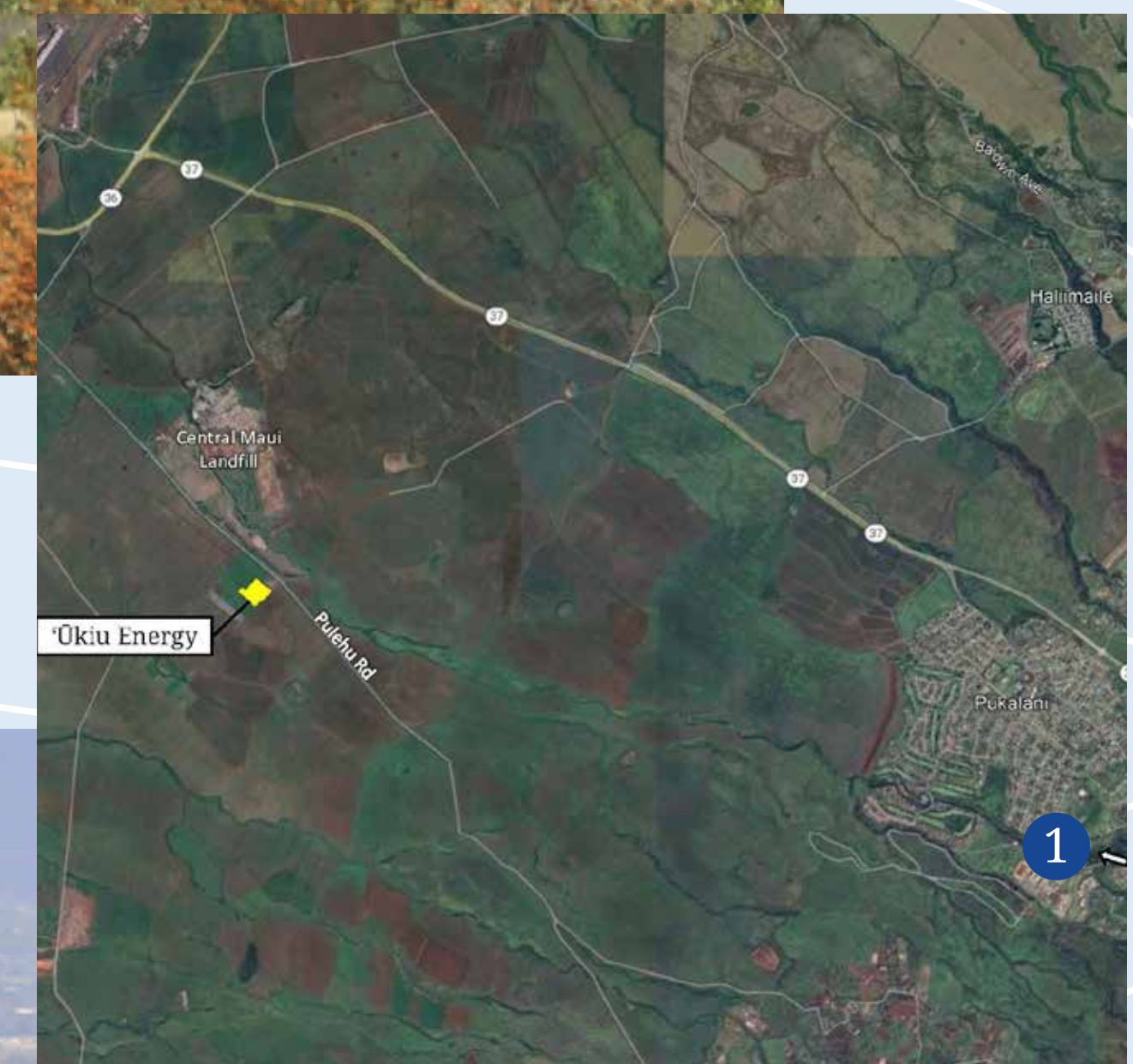
LED interior lighting and streetlights

6.1 MW rooftop solar PV

Benefits

- \$13 million annual savings for 25 years for each community
- 30% reduction in energy consumption
- Leverages private capital for public benefit
- Contributes to state's Renewable Portfolio Standard and decarbonization goals
- Water reduction
- \$472 million local investment
- Short- and long-term local jobs for 25 years

1 View of Ūkiu Energy from Aapueo Parkway *Viewing toward Kahului*

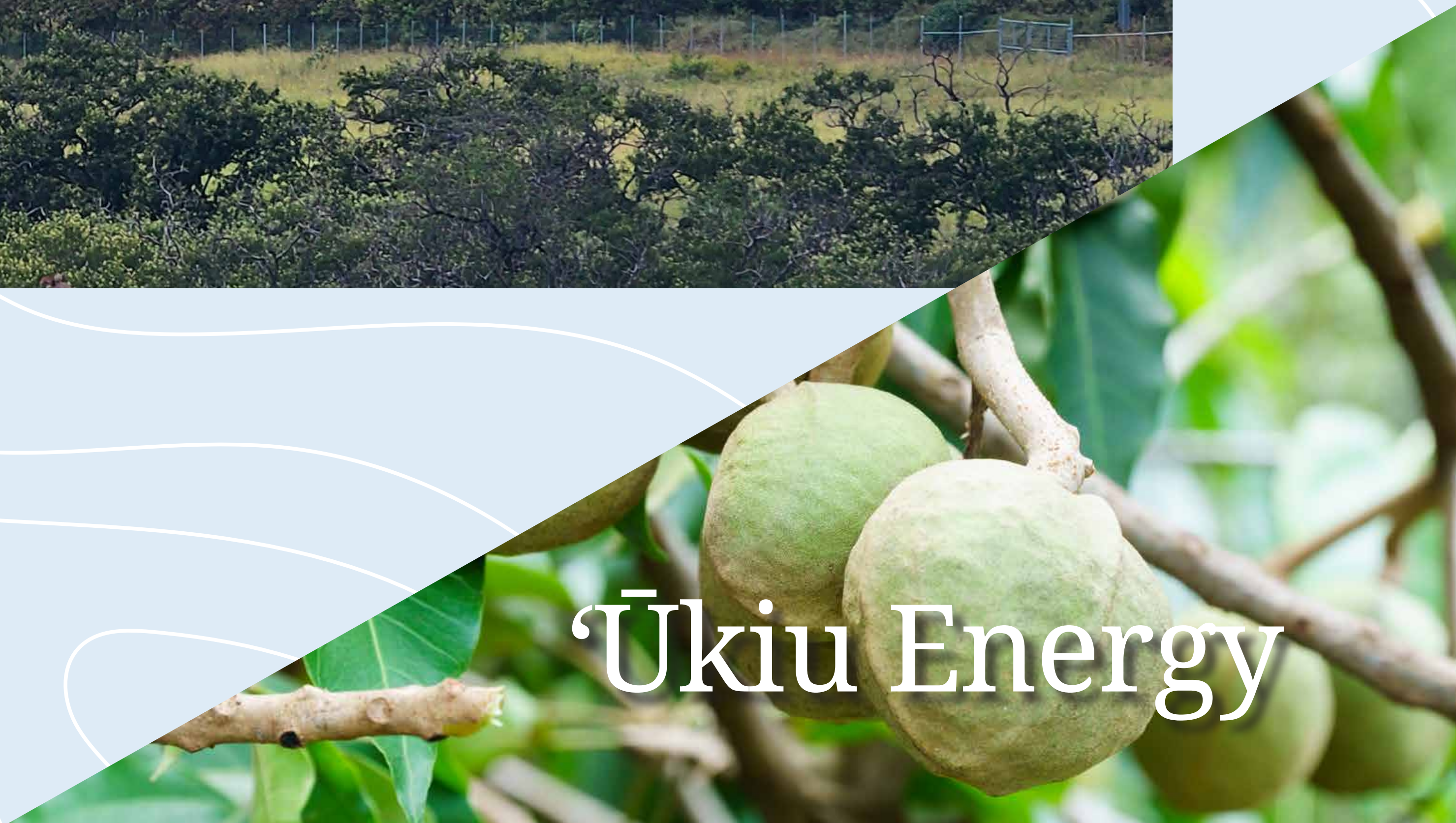
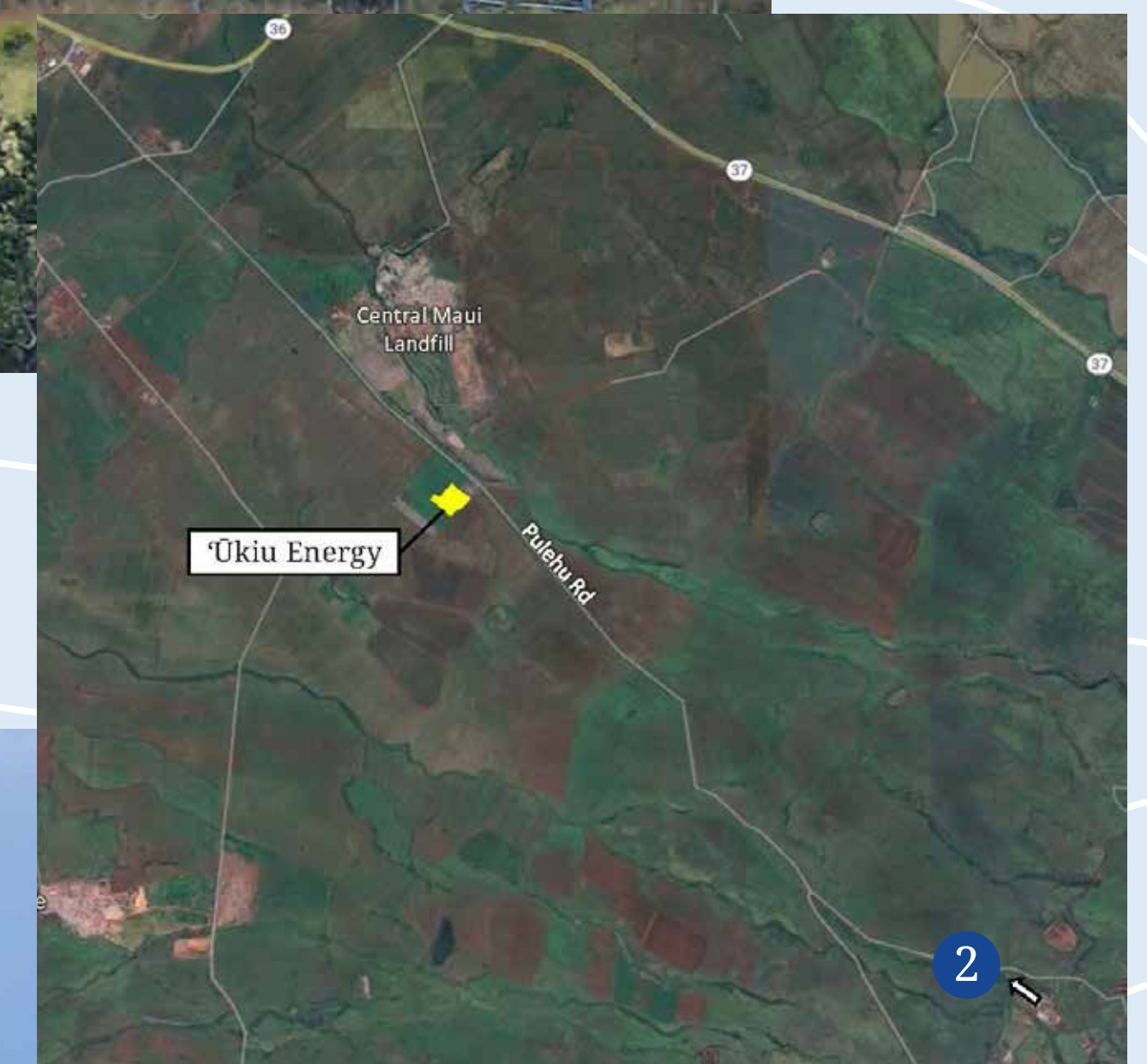
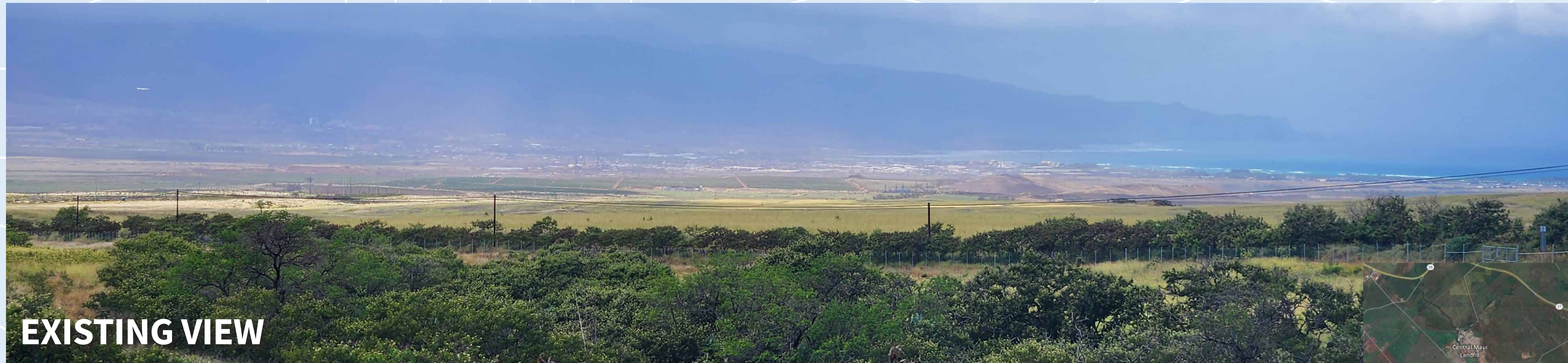


Ūkiu Energy

2

View of 'Ūkiu Energy from Ocean Vodka

Viewing toward Kahului

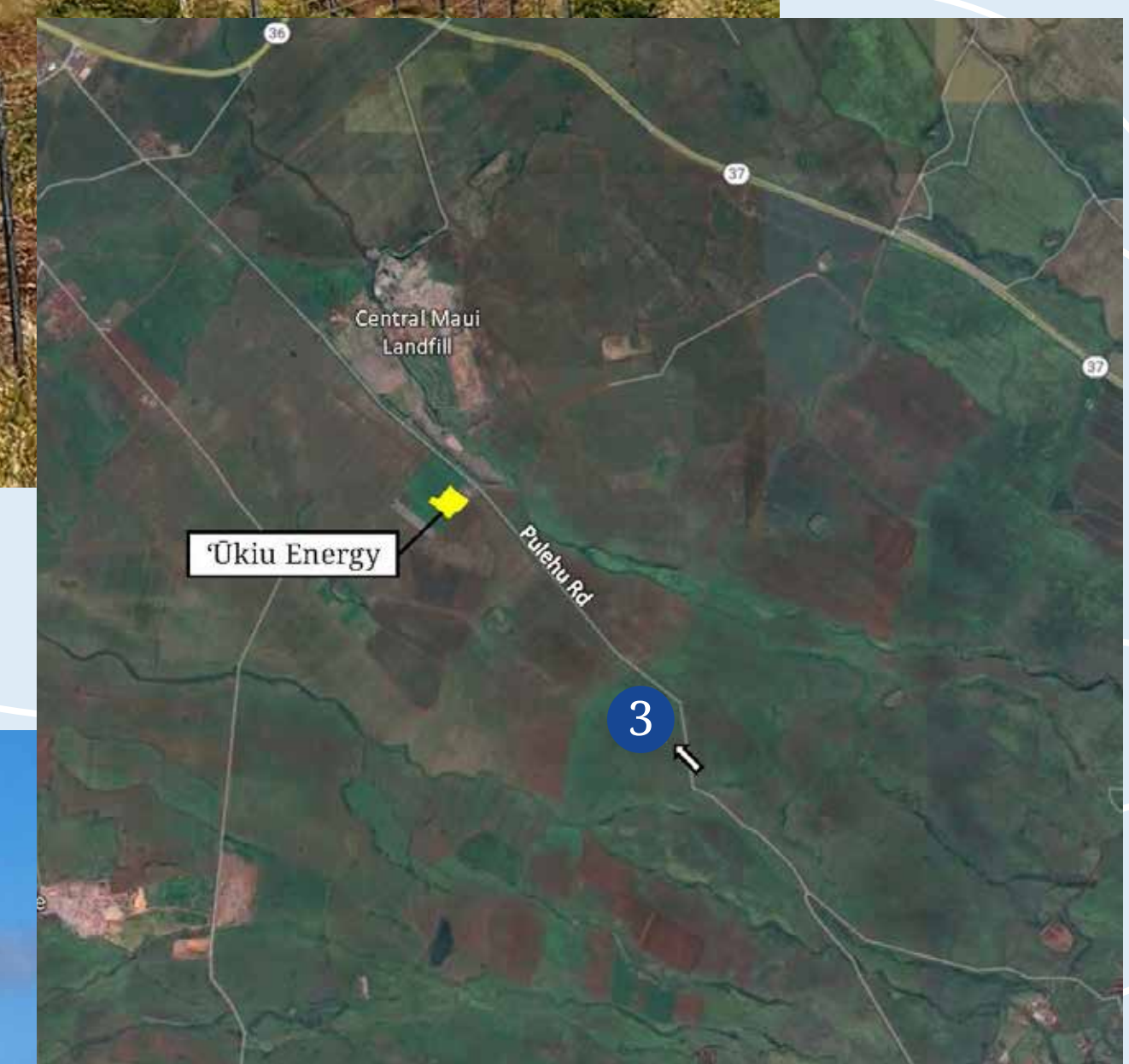


Ūkiu Energy

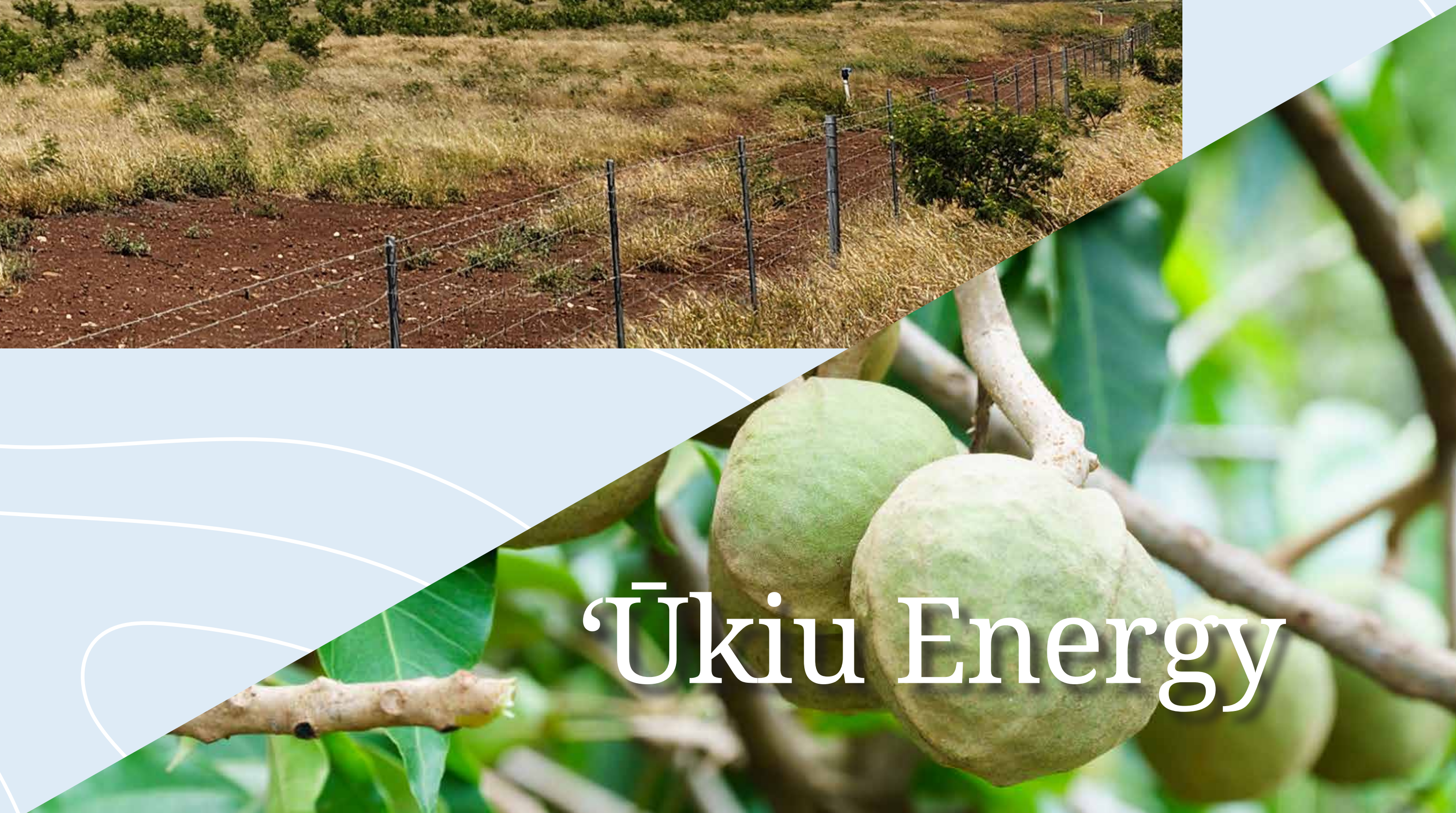
3 View of 'Ūkiu Energy from Pulehu Road *Viewing toward Kahului*



EXISTING VIEW



POTENTIAL VIEW



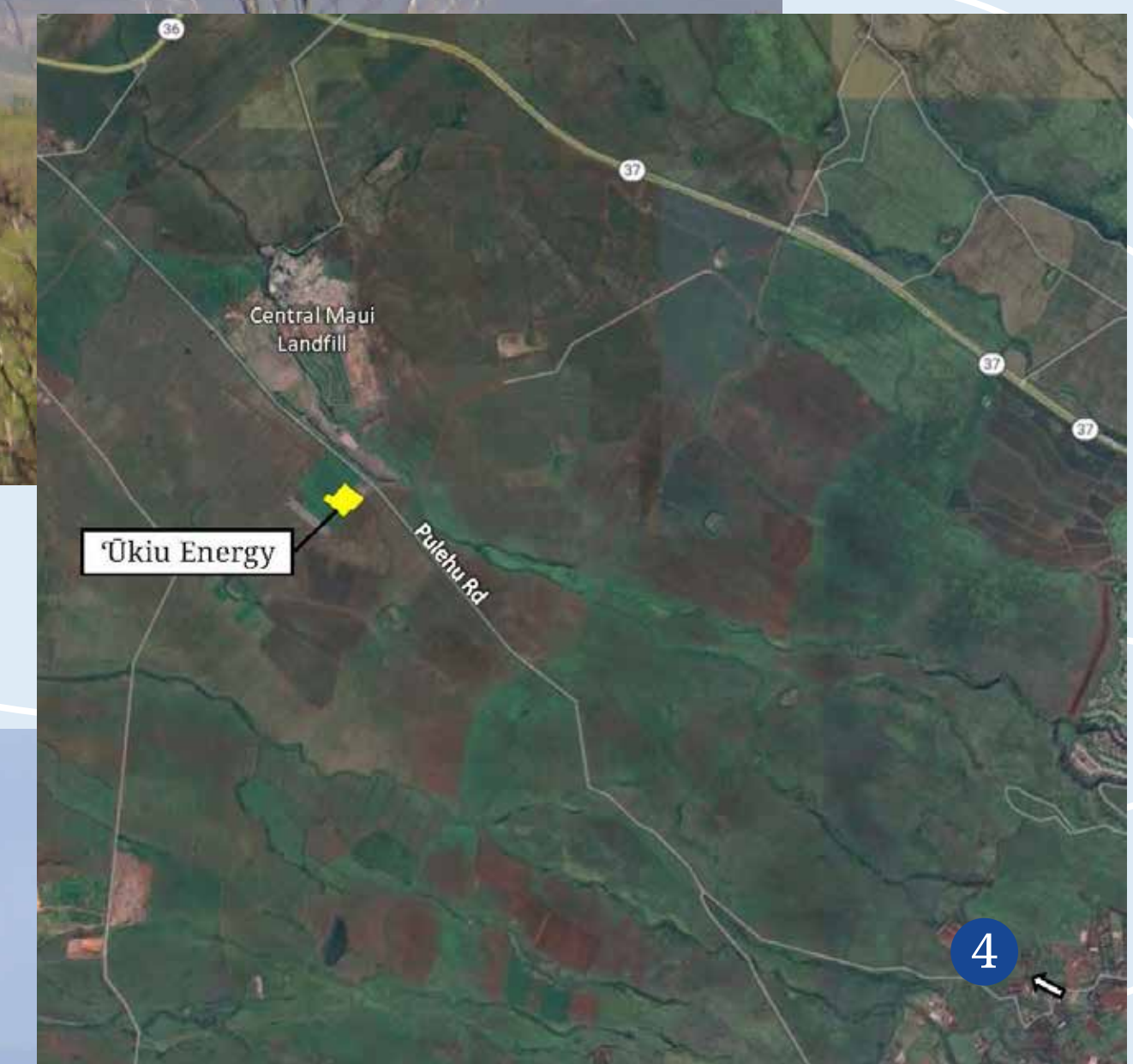
'Ūkiu Energy

4 View of 'Ūkiu Energy from Omaopio Road

Viewing toward Kahului



EXISTING VIEW



POTENTIAL VIEW



'Ūkiu Energy